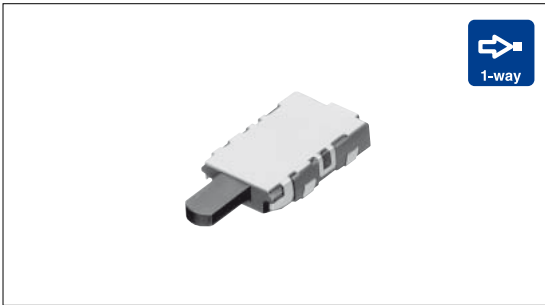


Detector Switch Low-profile One-way Operation Type

SPVP Series



Long 2mm travel and 1.2mm thickness low-profile structure.



Typical Specifications

Items		Specifications
Rating (max.)/(min.) (Resistive load)		1mA 5V DC/100 BA 3V DC
Contact resistance (Initial/After operating life)		5 Ω max./10 Ω max.
Operating force		0.55N max.
Operating life	Without load	50,000cycles
	With load	50,000cycles (1mA 5V DC)

Detector

Push

Slide

Rotary

Encoders

Power

Dual-in-line
Package Type

TACT Switch™

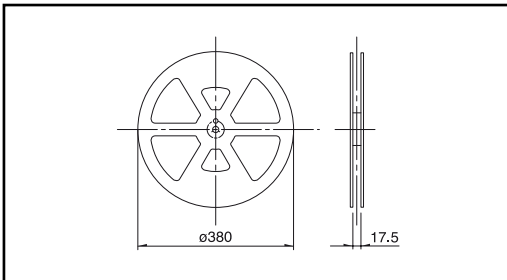
Custom-
Products

Product Line

Poles	Positions	Terminal type	Location lug	Product No.
1	1	For PC board (Reflow)	With	SPVP110100
			Without	SPVP120100

Taping Specifications (Taping Packaging)

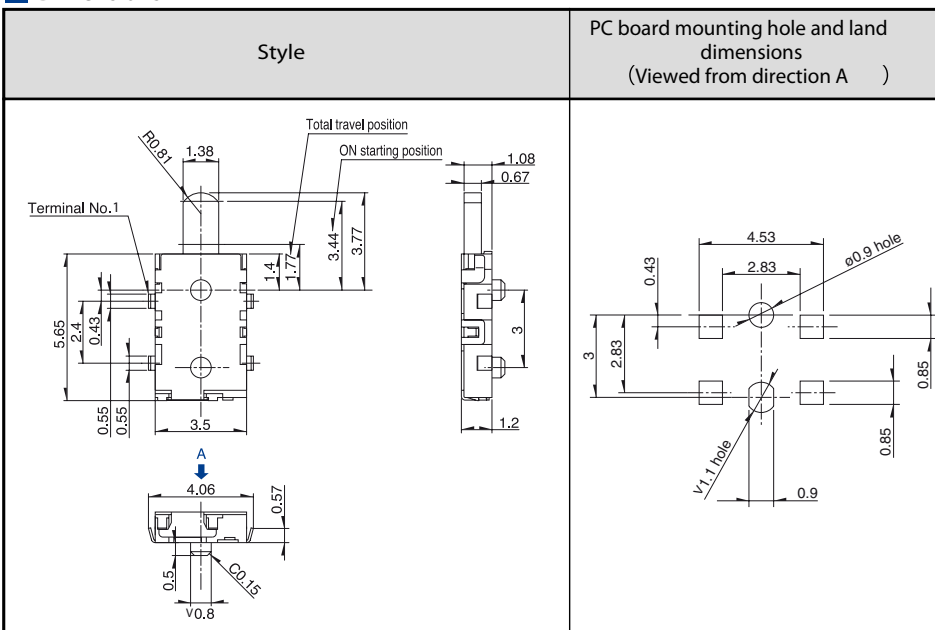
Reel Size Unit:mm



Number of packages (pcs.)			Tape width (mm)
1 reel	1 case /Japan	1 case /export packing	
4,500	9,000	18,000	16

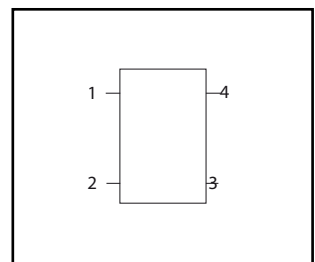
Dimensions

Unit:mm

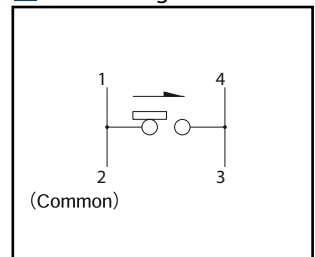


Terminal Layout

(Viewed from Direction A)



Circuit Diagram



Notes

- Above dimensions indicate "with location lug" version.
- Please place purchase orders per minimum order unit(integer).



Tel.: + 49 89 899797-64
Fax: + 49 89 899797-65
Email: info@dst-gmbh.de
Internet: www.dst-gmbh.de