

Detector Switch Water-proof Type

SPVQ6 Series



One of the smallest in the industry with 13.3G 5.3G 7mm.

Detector

Push

Slide

Rotary

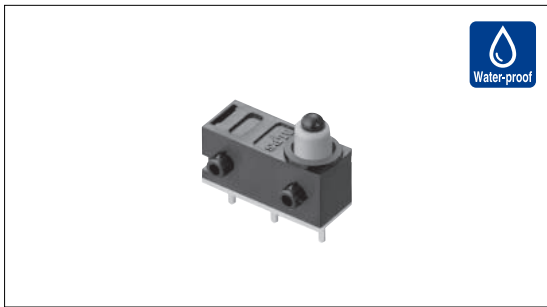
Encoders

Power

Dual-in-line
Package Type

TACT Switch™

Custom-
Products



Typical Specifications

Items		Specifications	
Rating (max.) (Resistive load)		0.1A 12V DC	
Voltage drop (Initial/After operating life)		0.2V max./0.3V max.	
Operating force		Push type	Actuator type
		1 ± 0.5N	3N max.
Operating life	Without load	300,000cycles	
	With load	300,000cycles (0.1A 12V DC)	

Product Line

Poles	Positions	Change over timing	Operating part shape	Terminal type	Main body form	Minimum order Unit (pcs.)	Product No.	Drawing No.
1	2	Non shorting	Push	For PC board	Boss - right side	6,000	SPVQ640100	1
					Boss - left side		SPVQ640200	2
			Actuator		Boss - right side		SPVQ630100	3
					Boss - left side		SPVQ630200	4

Dimensions

Unit:mm

No.	Style
1	<p>Technical drawing of Style 1 detector switch. Dimensions include: Total travel position, Terminal No.1 -2 Operating position, Terminal No.1 -3 Operating position, Free position Terminal No.1 -3 ON, Terminal No.1, Terminal No.2, Terminal No.3, 13.3, 5.08, 5.08, 3-0.6, 8, 2.6, 0.5, 6.5, 7.3, 6.8, 4.8, 0.2, 0.185, 0.4, 1.5, 2.6, 5.3.</p>
2	<p>Technical drawing of Style 2 detector switch. Dimensions include: Total travel position, Terminal No.1 -2 Operating position, Terminal No.1 -3 Operating position, Free position Terminal No.1 -3 ON, Terminal No.1, Terminal No.2, Terminal No.3, 13.3, 5.08, 5.08, 3-0.6, 8, 2.6, 0.5, 6.5, 7.3, 6.8, 4.8, 0.2, 0.185, 0.4, 1.5, 2.6, 5.3.</p>

Notes

- This unit cannot be used in water.
- Please place purchase orders per minimum order unit (integer).



Tel.: + 49 89 899797-64
 Fax: + 49 89 899797-65
 Email: info@dst-gmbh.de
 Internet: www.dst-gmbh.de

Dimensions

Unit:mm

No.	Style
3	<p>Labels for style 3: Total travel position Terminal No.1 -2 Operating position Terminal No.1 -3 Operating position Free position Terminal No.1 -3 ON Terminal No.1 Terminal No.2 Terminal No.3</p>
4	<p>Labels for style 4: Total travel position Terminal No. 1 -2 Operating position Terminal No.1 -3 Operating position Free position Terminal No.1 -3 ON Terminal No.1 Terminal No.2 Terminal No.3</p>

Detector

- Push
- Slide
- Rotary
- Encoders
- Power
- Dual-in-line Package Type
- TACT Switch™
- Custom-Products

Circuit Diagram

